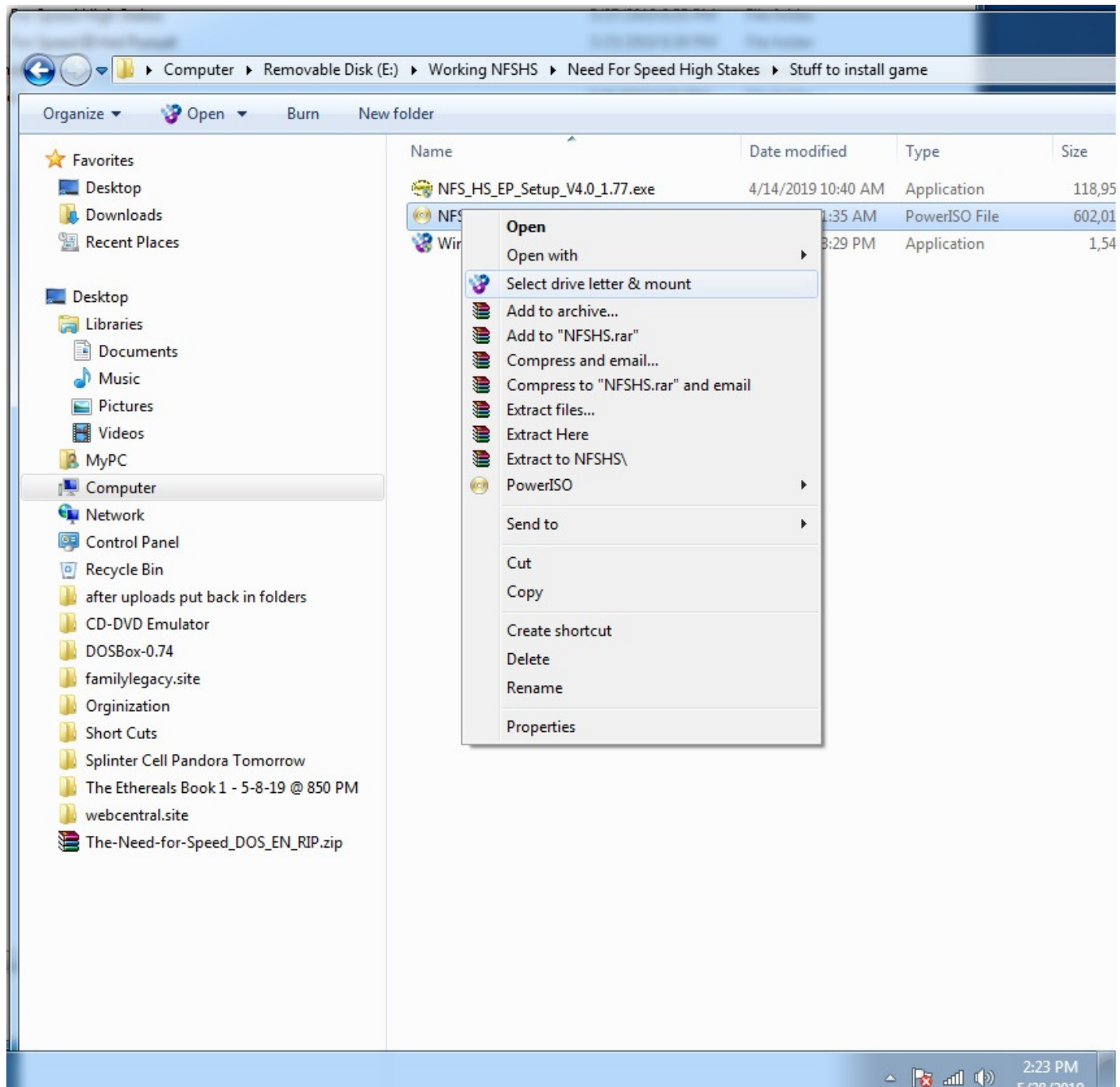
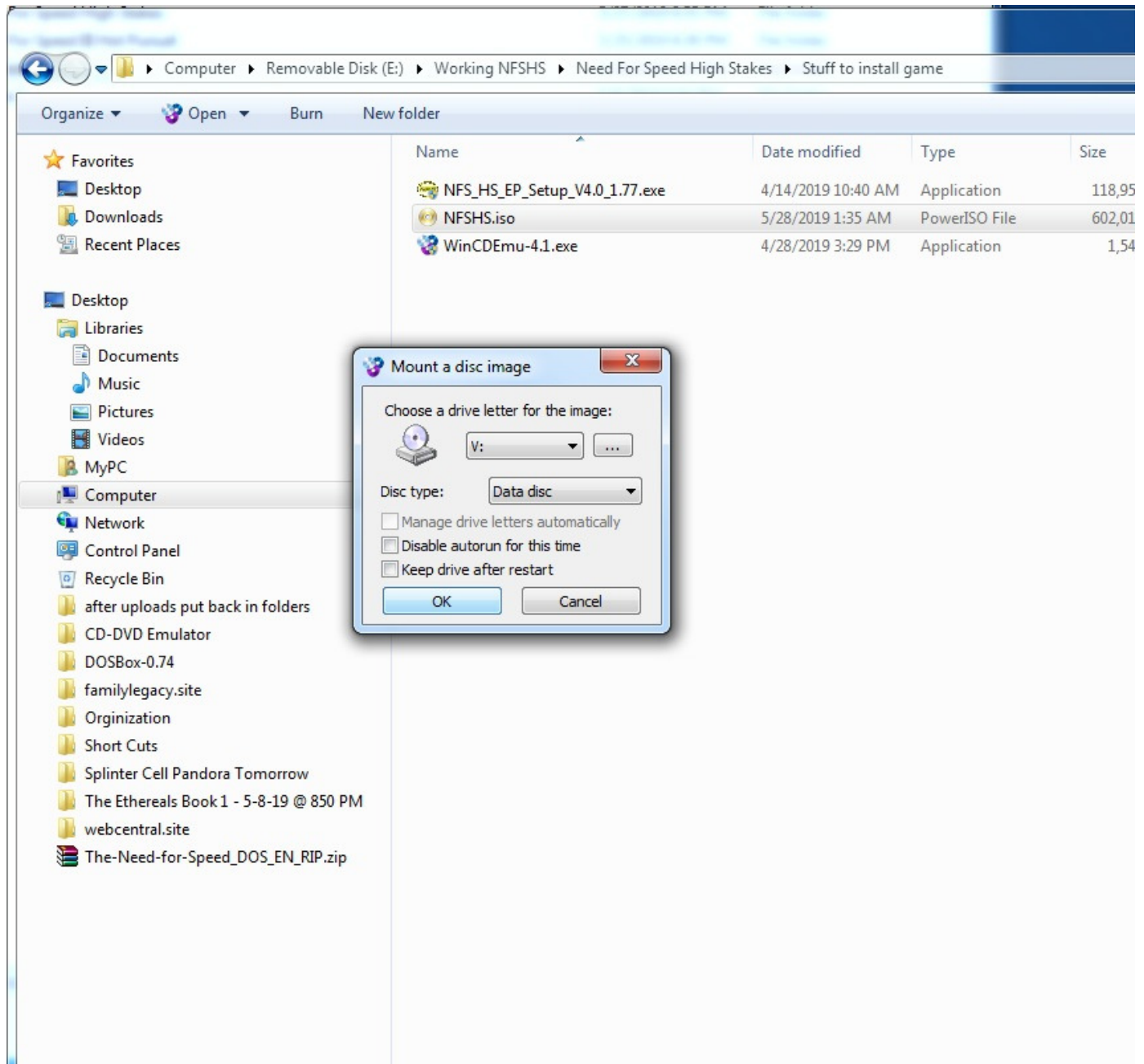


Tutorial: How to Mount an ISO File Using WinCDEmu

1. Right click on the iso and mount by Select drive letter & mount.



2. Mount a disc image.

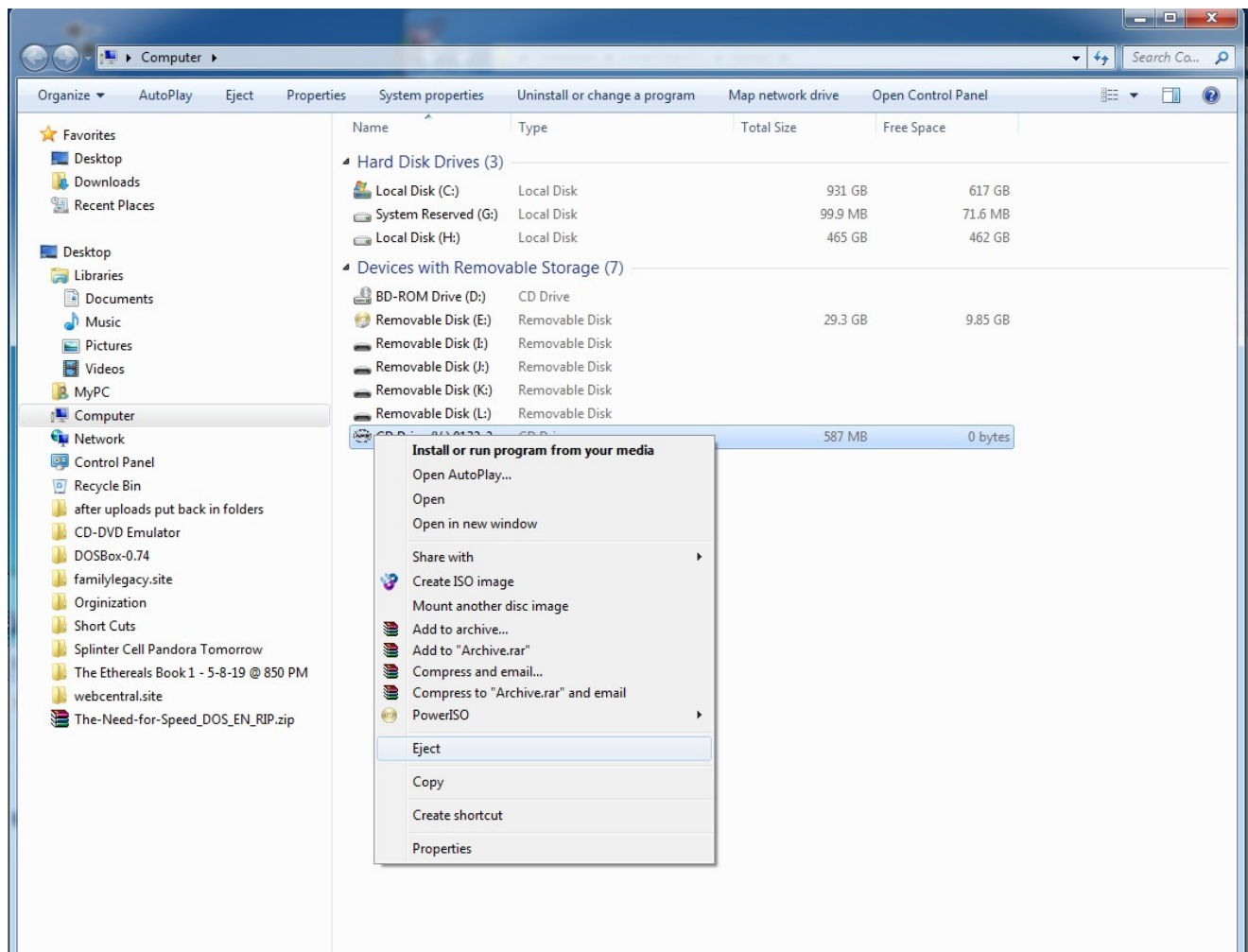


Here you have several options.

You can change the drive letter image and or the Data disc, but I leave this as is.

You can also click the Keep drive after restart. Some games downloaded from Web Central you will need to do this, some games you will not need to do this.

3. Eject the image when no longer needed.



Open My Computer and eject the image when no longer needed.